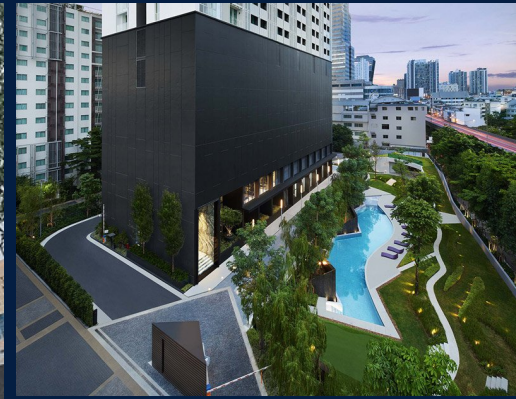


FOR SALE

RESIDENTIAL - CONDOMINIUM 353SQFT (33SQM) / CALL FOR PRICE!

+65 9247 8880



1 - Bedroom

TYPE B
353 sqft (32.64 sqm)



RESIDENTIAL - CONDOMINIUM

ASOKE - DINDAENG ROAD, DINDAENG SUB-DISTRICT, DINDAENG DISTRICT, 10400, BANGKOK,

- LISTING ID: SGLD10949052
- TENURE: FREEHOLD
- TITLE: N/A
- SIZE BUILT-UP: 353SQFT (33SQM)
- SIZE LAND: 42,354SQFT (3,935SQM)
- NO. OF FLOORS: 30
- FLOOR/LEVEL: N/A - N/A
- BED ROOMS: 1
- BATH ROOMS: 1
- MAIDS ROOMS: N/A
- PARKING SPACES: N/A
- LAYOUT TYPE: REGULAR
- FACING: N/A
- VIEWING: OTHER
- SELLING PRICE: **CALL FOR PRICE!**
- COMPLETION YEAR: 2019
- CONDITION: ORIGINAL CONDITION
- FURNISHING: PARTIALLY FURNISHED
- LISTING DATE: NOV 20, 2019

A SPACE ID ASOKE-RATCHADA

Partially furnished, 1 bedroom, 1 bathroom Condominium for Sale. Completion in 2019, this unit is in original condition. Others: Freehold This property is currently vacant and ready to move in. Location: Bangkok, Thailand.

INTERIOR FACILITIES

- Air-Conditioning
- Cable TV
- Balcony

OTHER INTERIOR FEATURES

- Cooker Hob/Hood
- Oven / Microwave
- Fridge
- Water Heater

EXTERIOR FACILITIES

- 24 Hours Security
- Landscaped Garden
- Covered Car Park
- Launderette

VISIT THIS PROPERTY AT: <https://www.matthewleoproperties.com/property/SGLD10949052>



MATTHEW LEO - HUTTONS ASIA PTE LTD

3 Bishan Place #05-01 CPF Bishan Building
D20, 579838, Singapore

+65 9247 8880
WhatsApp Me

leo@matthewleoproperties.com

<https://www.matthewleoproperties.com>

L3008899K
R030454B



Scan QR Code

Huttons
The Agency of Choice
Call for Viewing
+65-92478880